



TRAFFIC SOLUTIONS PTY LTD

Reference No : 19.20.040
13 December 2019

Mr. Lloyd Williams
4 Mowamba Place
Thredbo NSW

Dear Lloyd,

Car Park and Manoeuvring Assessment – Bernti’s Mountain Inn, 4 Mowamba Place, Thredbo

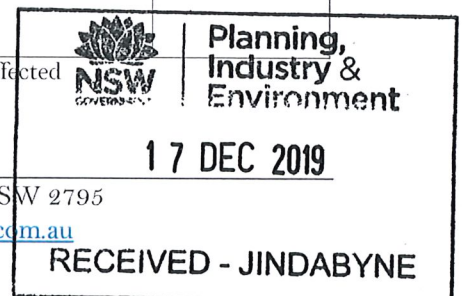
As requested, I have reviewed the architectural plans provided for the subject property and assessed the proposed car parking layout against the Australian Standard AS/NZS 2890.1:2004 and AS/NZS 2890.6:2009.

Geometric design requirements for car park layouts are specified in the ‘*Australian/New Zealand Standard, Parking Facilities Part 1; Off Street Car Parking (AS/NZS 2890.1)*’ of 2004 and *Australian/New Zealand Standard, Parking Facilities Part 6: Off street Parking for People with Disabilities* of 2009. Part 1 of this standard classifies this development as a Class 2 off-street car parking facility requiring a category 1 driveway. The following table provides a comparison on the requirements of AS/NZS 2890.1 and AS/NZS 2890.6 applicable to the car parking proposal.

FEATURE	AS/NZS 2890.1 & AS/NZS 2890.6 REQUIREMENT	PROPOSED	CONFORMS TO STANDARD
Parking Space	5.4m x 2.5m car space Additional 300mm when adjacent a wall	5.4m x 2.5m (2.4m clear of columns) no spaces adjacent a wall	YES
	5.4m x 2.4m plus 5.4m x 2.4m shared zone for disabled spaces	5.4m x 2.4m with 5.4m (reducing to 4m) x 2.4m shared area	YES (see notes)
Aisle Width	4.6m	Generally, 5.2m, car space is 3.8m to wall on east side, however, is unrestricted car space width. See swept paths	YES
Blind Aisle	1.0m	Not applicable	YES
Driveway Width	Category 1 d/w = 3m – 5.5m Category 2 d/w = 6m – 9m Note: Driveways are normally combined, but if separate, both entry and exit widths should be 3.0m min.	7.8m	YES

Note 1: The critical side loading area depicted in AS/NZS 2890.6:2009 is not affected

Note 2: A column is provided in lieu of a Bollard in the shared area



Traffic Solutions Pty Ltd, PO Box 9161, Bathurst NSW 2795

Ph: 02 6331 0467 • Email: craig@trafficsolutions.com.au

ABN 63 074 165 263

FEATURE	AS/NZS 2890.1 & AS/NZS 2890.6 REQUIREMENT	PROPOSED	CONFORMS TO STANDARD
Car park Grades	1 in 20 (5%) for 1 st 6m	Car park at grade <5%	YES
Headroom	2.3m desirable 2.2m minimum 2.5m above disabled space	3.0m	YES
Pedestrian sight line splay	2m (along frontage) x 2.5m (into site)	7.8m wide driveway provided in lieu	YES

In conclusion, the proposed development is considered to meet the relevant Australian Standards AS/NZS 2890.1 and AS/NZS 2890.6 requirements for car parking.

MANOEUVRING

To depict how vehicles can manoeuvre within the development, turning paths have been generated using AUTOCAD VEHICLE TRACKING software. Attached for Council's consideration is an AUTOCAD drawings depicting the AS/NZS 2890.1:2004, B85 car reversing from the more difficult car spaces and exiting the site in a forward direction. This attachment depicts that that the design vehicle can satisfactorily manoeuvre within the development.

Whilst it is generally desirable for a vehicle to be able to enter and leave a car space in 3 movements (1 in and 2 out or vice versa) it is very common for drivers to undertake additional manoeuvres to ensure accuracy.

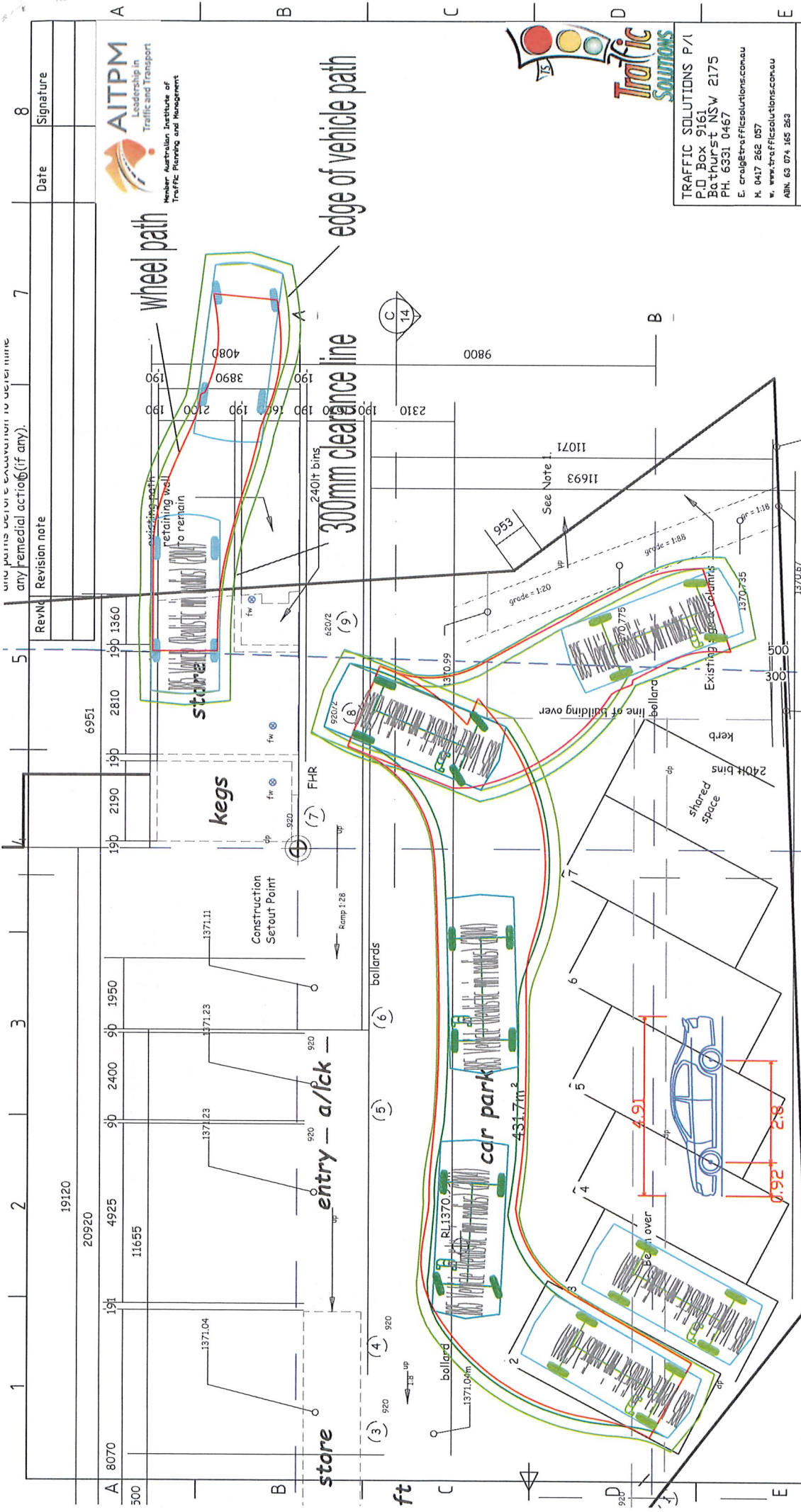
It should be noted that car space 1 is to be allocated to the on site manager.

Should you require any additional information or clarification of the contents of this letter please contact me on the numbers provided.

Yours sincerely



Craig Hazell
Director



TRAFFIC SOLUTIONS P/1
 P.O. Box 9161
 Bathurst NSW 2175
 PH. 6331 0467
 E. crug@trafficsolutions.com.au
 H. 0417 266 057
 W. www.trafficsolutions.com.au
 ABN. 63 074 165 263

Address
 4 Mowamba Place
 Thredbo

Title
 AS/NZS 2890.1:2004
 B85 car swept
 turning paths

Date 13/12/19 Scale 1:100 @ A3
 Client
 LH Williams Pty Ltd
 File No. 19.20.040 Dwg No. 1



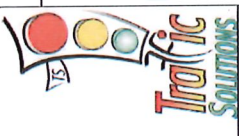
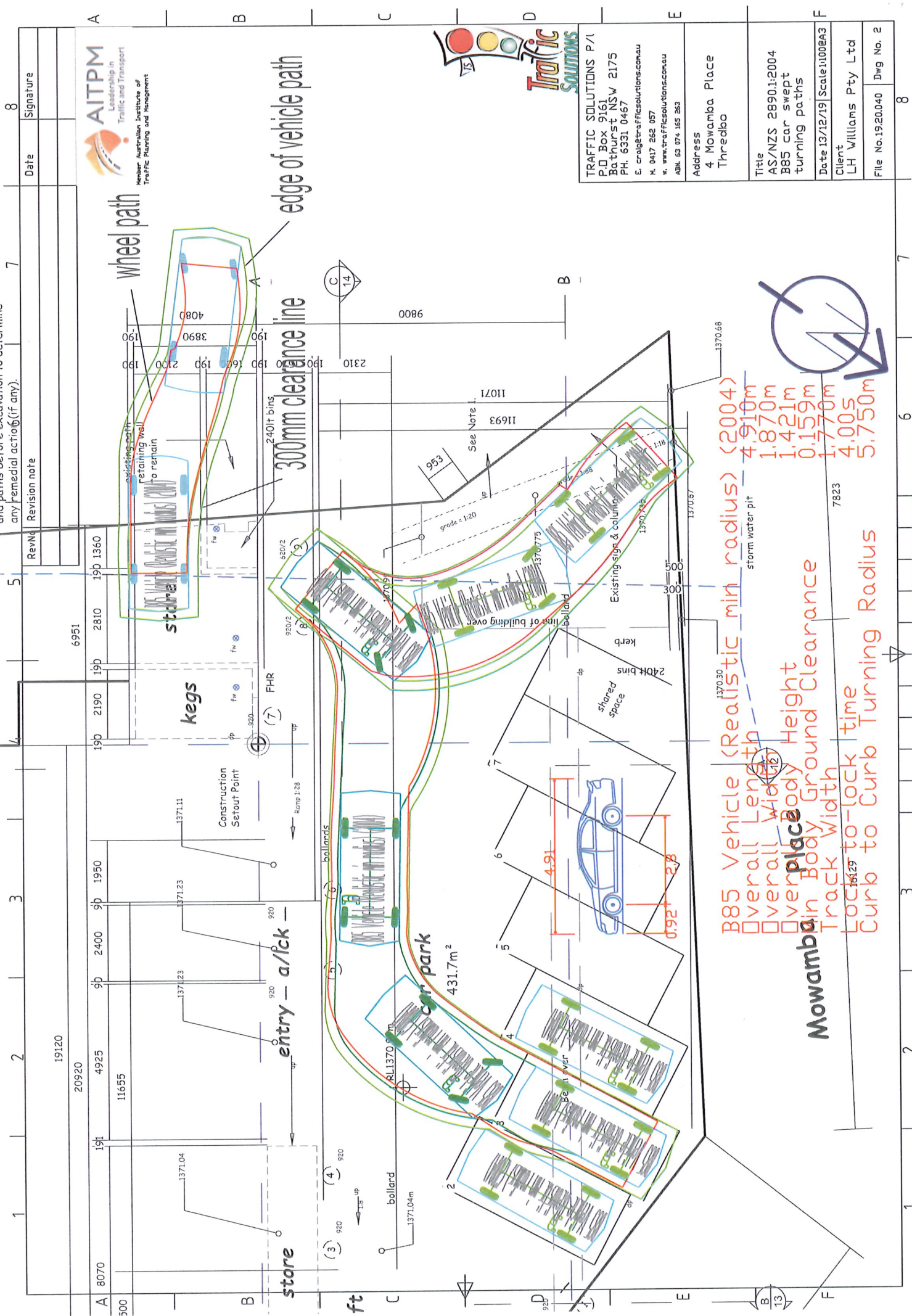
Rev	Date	Signature
8		

any permits before excavation to verify any remedial action (if any).

Rev	Revision note
5	
7	

B85 Vehicle (Realistic min radius) (2004) 4.90m
 Overall Length 1.870m
 Overall Width 1.421m
 Overall Body Height 0.159m
Mowamba Place 1.770m
 Track Width 1.770m
 Lock-to-lock time 4.00s
 Curb to Curb Turning Radius 5.750m

UNIT PARTS DETAIL & DIMENSIONS TO BE SHOWN
 any remedial action (if any).



TRAFFIC SOLUTIONS P/L
 P.O. Box 9161
 Bathurst NSW 2175
 PH. 6331 0467
 E. craight@trafficsolutions.com.au
 M. 0417 262 087
 W. www.trafficsolutions.com.au
 ABN 63 074 185 283

Address
 4 Mowamba Place
 Thredbo

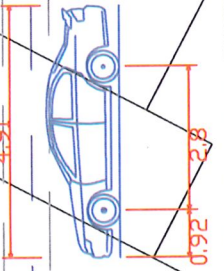
Title
 AS/NZS 2890.1:2004
 B85 car swept
 turning paths

Date 13/12/19 Scale 1:1000@A3
 Client
 LH Williams Pty Ltd

File No. 19.20.040 Dwg No. 2

Realistic min radius (2004)
 storm water pit 4.91m
 Overall Length 1.870m
 Overall Width 1.421m
 Vehicle Body Height 0.159m
 Vehicle Body Width 1.770m
 Lock to-lock time 4.00s
 Curb to Curb Turning Radius 5.750m

Mowamba Place



1 2 3 4 5 6 7 8